



Rural Evaluation **NEWS**

THE NEWSLETTER OF THE EUROPEAN EVALUATION HELPDESK FOR RURAL DEVELOPMENT

INTRO BY COMMISSIONER HOGAN

In 2013, the Common Agricultural Policy (CAP) underwent an important reform. As a result, we not only have a policy which is closely aligned with the Europe 2020 objectives of fostering smart, sustainable and inclusive growth, but which is also better able to respond to the challenges and opportunities faced by the agricultural sector and the rural economy.

Increasing the effectiveness

of the policies funded by the EU budget is an important objective of this Commission, as a way to maximise the benefits for European citizens and optimize the use of financial resources.

It is in this context that a Common Monitoring and Evaluation Framework has been set up for the CAP as a whole and a specific Monitoring and Evaluation System developed for rural development policy, built on the achievements of the previous programming period.

I am a strong supporter

of the rural development policy because it gives flexibility not only to Member States and regions, but also to individual farmers and rural players, to pursue their ambitions. It is a policy which can deliver jobs, growth and a sustainable future for our rural areas.

However, we are confronted with a major challenge, and that is to persuade the wider public of the benefits of our policy, not only for farmers and rural actors but for citizens in general. We need both to make sure that



the rural development policy delivers and to show its achievements.

This is precisely one of the reasons why the monitoring and evaluation system for rural development programmes is so important. The system put in place for these programmes is amongst the most advanced of any EU policy. The targets included in every RDP set a benchmark >



NEWS

THE TEAM SUPPORTING THE EVALUATION
OF THE COMMON AGRICULTURAL POLICY

PAGE 2



GUIDANCE

FIRST THEMATIC WORKING
GROUP LAUNCHED!

PAGE 10



BACK TO BASICS

CMEF
OR CMES ?!

PAGE 11



EVENTS

CALENDAR
WHAT'S NEXT

PAGE 12

- > for what should be achieved, against which the policy can be monitored, to see if it is progressing as intended. This will help to highlight issues at an early stage so that programmes can be adjusted if necessary. And the built-in evaluations will enable us to see the contribution to important policy objectives such as the roll-out of high-speed broadband in rural areas, and the creation of new jobs. The system will play a major role in improving policy performance. And that is in fact the objective we should work for: delivering real policy results!

As stated in the recent Communication "Better regulation for better results - An EU agenda", *"EU policies should also be reviewed regularly: we should be honest and accountable about whether we are meeting our policy objectives - about what has worked well and what needs to change"*. It is clear that evaluations are essential

to bring this task to a successful end. And it is also clear that the Common Monitoring and Evaluation System should play a major role in this endeavour. It will help us to demonstrate the impacts of the policy and therefore puts strong emphasis on good data sets and robust evaluation methods.

We've got a powerful system

– what's important now is to make it work. This requires commitment and involvement from a wide spectrum of people. I know that we can count on the commitment and expertise of the European Evaluation Helpdesk for Rural Development to support us all in that. Let's all work together and ensure that the full potential of rural development policy is delivered and appreciated by the public at large. ■

THE TEAM SUPPORTING THE EVALUATION OF THE COMMON AGRICULTURAL POLICY

The European Commission's Directorate-General for Agriculture and Rural Development (DG AGRI), and in particular Unit E.4 "Evaluation and Studies", is renewing its efforts to structure and facilitate the evaluation of the CAP, and to demonstrate results and impacts of the CAP for the 2014-2020 programming period. Unit E.4 is in turn assisted through a technical assistance contract by the European Evaluation Helpdesk for Rural Development to support Member States' evaluations, capacity building and broader evaluation of Pillar II.

The 2014-2020 programming period has brought important changes to the Common Monitoring and Evaluation System (CMES) for rural development policy. Moreover, for the first time a Common Monitoring and Evaluation Framework (CMEF) was set up for the whole CAP, i.e. both Pillar I (direct payments and market measures) and Pillar II (rural development).

DG AGRI's Unit E.4 - Evaluation and Studies

DG AGRI's Unit E.4 is in charge of evaluations and studies on any CAP topic, including the planning, contracting and management of evaluations and studies.

Evaluations help improve policy implementation and also feed into the design of future policy. **Evaluating policy performance** and reporting achievements are increasingly important tasks for Unit E.4 as policy performance receives increased attention from the European Parliament and is under stricter scrutiny from the European Court of Auditors. Such accountability involves not only assessment of policy outputs, - for instance the number of projects financed, but also requires demonstration of the impacts of the policy intervention on the whole farming sector.

"During our mandate the Commissioner for Agriculture and Rural Development shall focus on 'regularly monitoring the benefit of action at EU level, reviewing the effectiveness of spending programmes and reporting back on the performance of the programmes and the results achieved'".

Jean-Claude Juncker,
President of the European Commission.

"It has become more and more important to know if we are doing things right and if we are doing the right things",

Adelina dos Reis, the Head of Unit E.4.

Unit E.4 has four main tasks:

- to plan, develop, manage and report on evaluation activities, providing information on the effectiveness, efficiency and relevance of measures applicable in agriculture (Pillars I and II of the CAP);
- to assist Member States in evaluation activities;
- to run the Expert Group on Monitoring and Evaluating the CAP;
- to provide support for the planning and financial and contractual management of external studies and European Parliament pilot projects, as well as preparatory actions and data purchases.

DG AGRI's multi-annual evaluation and studies plan establishes the sequence and topics of evaluations and studies that are scheduled for a given five-year period. The plan is updated at least once a year and ensures the availability of relevant evaluation results in a timely manner in order to inform the decision-making of the Directorate-General. It is based on legal requirements, policy needs expressed by DG AGRI Units, and commitments made by the European Commission to the European Parliament and the European Court of Auditors. It follows closely the CAP's implementation and reporting obligations.

Responsibility for the evaluation of Pillar I lies directly with Unit E.4 who contract work through open calls for tenders and manage various evaluations and studies.

Responsibility for the evaluation of rural development programmes (Pillar II) lies with Member States. Unit E.4 support and guide Member States in the preparation and execution of their evaluations, and are in charge of the EU synthesis of the ex ante and ex post evaluations carried out by Member States.

"We need to help the Member States the best we can. We rely on the Evaluation Helpdesk to ensure that the different evaluations from Member States are comparable, so that they can be synthesized and used to nourish the rural development policy decision-making process. We could not do all this ourselves without the Evaluation Helpdesk and its team of experts."

Adelina dos Reis, the Head of Unit E.4

In the current programming period, Unit E.4 will also oversee the evaluation of the combined impact of Pillar I and II using framework contracts. Three framework contracts will analyse the combined impact of CAP measures to each of the CAP's general objectives. A fourth framework contract will analyse the impact of the CAP on cross-thematic issues, as well as provide for a synthesis of evaluation and study findings. These four framework contracts will be preceded by a mapping and first analysis of CAP implementation which will contribute to the reports the Commission will present to the European Parliament and the Council of the European Union on the performance of the CAP in 2018 and 2021.

The results of all evaluations and studies are made available on the Europa website:

http://ec.europa.eu/agriculture/external-studies/index_en.htm

http://ec.europa.eu/agriculture/evaluation/index_en.htm

DG AGRI's Unit E.4 - The Team

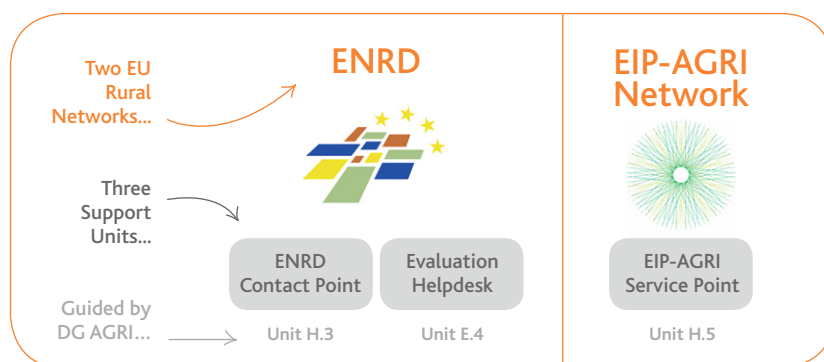
Unit E.4 is composed of a team of specialists with expert knowledge and experience of agriculture, rural development and environmental issues. The financial and technical managers within the team are jointly in charge of contracting out and managing evaluations and studies. Technical managers are experts in different policy areas and have relevant evaluation knowledge and skills, while the expertise of financial managers is in the area of contract management and public procurement. The unit collaborates closely with the policy units of DG AGRI. Each evaluation or study is overseen by a steering group, which not only draws upon knowledge from within DG AGRI, but also from other Directorates-General.

Some of the unit's technical managers also have responsibility for the Expert Group on Monitoring and Evaluating the CAP and manage the Evaluation Helpdesk contract. ■

THE EUROPEAN EVALUATION HELPDESK FOR RURAL DEVELOPMENT

The new Evaluation Helpdesk was constituted on 1st January 2015. The contractor (Metis GmbH) and sub-contractors (The James Hutton Institute, the University of Patras, IDEA Consult) run the Evaluation Helpdesk under the guidance of DG AGRI's Unit E.4.

The European Evaluation Helpdesk for Rural Development is one of the two support units of the [European Network for Rural Development \(ENRD\)](#), with the other support unit being the Contact Point. The role of the Evaluation Helpdesk is to provide technical support for carrying out evaluation related tasks to the Commission and the ENRD as stated in Article 52 of [Regulation \(EU\) No 1305/2013](#).



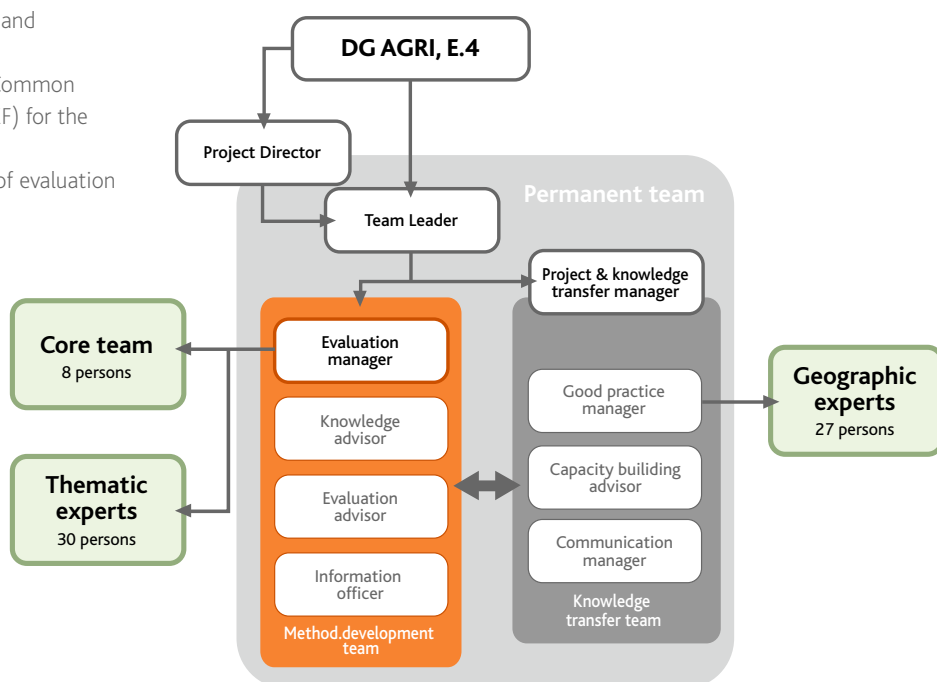
Aiming to improve evaluation of rural development policy

The Evaluation Helpdesk's overall objective is to contribute to improved evaluation of EU rural development policy. In this context the 2014-2020 programming period brings new challenges for the Evaluation Helpdesk, such as:

- Ensuring the comparability of evaluation findings at EU level;
- Promoting data management for evidence-based evaluation;
- Strengthening the effective communication and dissemination of evaluation findings;
- Dealing with the implications of a singular Common Monitoring and Evaluation Framework (CMEF) for the whole CAP¹;
- Broadening and strengthening the network of evaluation stakeholders.

Integrating evaluation knowledge of various expert teams

The Evaluation Helpdesk seeks to effectively integrate the wealth of methodological and practical know-how of various evaluation experts across Europe. A well-rehearsed division of work between different working teams ensures that outputs are produced in a timely manner and meet scientific and practical standards.



Get to know the team members of the Evaluation Helpdesk

1. As stipulated in Article 110 of Regulation (EU) No 1306/2013.

The **permanent team** of the Evaluation Helpdesk is based in Brussels, and works closely with DG AGRI's Unit E.4. It runs the day-to-day services of the Evaluation Helpdesk, cooperates with the relevant Commission services, the ENRD Contact Point and the [Service Point of the EIP-Agri Network](#). The Team Leader guides the permanent team and is the primary contact person for the Commission.

The **methodological development team** is responsible for all content related activities (developing methodological guidance, answering evaluation-related queries, conducting training activities, providing technical support for the Commission) and is led by the Evaluation Manager. A **core team** of eight rural development evaluation experts and a pool of over 30 **thematic experts** bring in specific expertise to the work of the methodological development team whenever needed.

The **knowledge transfer team** collects and then disseminates relevant evaluation related information in a comprehensive yet attractive and user-friendly manner for different target audiences. The knowledge transfer manager leads the team and ensures that it makes best use of various communication tools such as the trilingual website (English, French and German), periodical newsletters, ad hoc reports on specific topics and social media.

Geographic experts are in direct contact with relevant stakeholders in Member States and help relay the Evaluation Helpdesk's outputs in Member States. They collect and disseminate relevant information and ensure a two way communication flow between Member States and the EU-level. The geographic experts organise yearly capacity building events in the Member States and collate examples of good practice.

Anticipating the needs of evaluation stakeholders

When preparing its Annual Work Programme (AWP), the Evaluation Helpdesk seeks to anticipate the themes that will gain importance in the upcoming year and will benefit most from the launch of targeted activities. Potential AWP topics are suggested by the Evaluation Helpdesk after a detailed analysis of the needs and questions that have been expressed by Member States. DG AGRI's Unit E.4 approves the AWP after consultation with the Expert Group on Monitoring and Evaluating the CAP and after internal consultation with relevant Commission services (see article on page 6).

Increasing focus on building evaluation capacity

The activities of the Evaluation Helpdesk help to facilitate the implementation and further development of the Common Monitoring and Evaluation System (CMES) for rural development.

Thematic working groups are the main avenue to develop methodological guidance in collaboration with evaluation experts from Member States.

Good practice workshops demonstrate and discuss concrete examples of how practitioners have approached evaluation tasks in Member States.

Specific evaluation trainings are run by the Evaluation Helpdesk's permanent team and focus on specific evaluation topics which are of interest to one or more Member States.

Yearly capacity building events are organized by Geographic experts in each Member State and serve to facilitate discussion of evaluation-related topics amongst a wider audience.

Dissemination activities (website, social media, newsletter, events) help to bring the products of the Evaluation Helpdesk to its target groups.

Various support services of the Evaluation Helpdesk ensure speedy response to evaluation-related queries, updated mailing lists, the organisation of ad-hoc workshops, the collection and analysis of evaluation-related information, support for meetings of the EU Rural Networks and the Expert Group of Monitoring and Evaluating the CAP. ■

Who is the Evaluation Helpdesk's target audience?

The Evaluation Helpdesk collaborates with and prepares support for all those that are involved in the evaluation cycle of rural development policy. In particular this comprises all those who:

- Manage evaluations (Managing Authorities, Evaluation Units within Ministries, Public Administrations and Commission services);
- Contribute with data and information to evaluations (Paying Agencies, data managers, statistical offices, Local Action Groups, National Rural Networks);
- Carry out evaluations and assessments (evaluators, researchers);
- Disseminate evaluation related information and build evaluation capacity amongst stakeholders (Monitoring Committees, National Rural Networks, EIP-Agri Network, etc.)

THE EXPERT GROUP ON MONITORING AND EVALUATING THE CAP

The Expert Group on Monitoring and Evaluating the CAP provides a forum for evaluation experts from Member States and the European Commission to exchange experiences, examples of good practice and information on all evaluation-related issues.

The **Expert Group** covers evaluation issues of relevance to both pillars of the CAP in accordance with Article 110 of [Regulation \(EU\) No 1306/2013](#). It enables the development and exchange of expertise on a wide array of evaluation topics. Specific rural development evaluation issues are discussed with a focus on technical aspects and with the aim of providing guidance and support to Member States as to how to organise and implement their evaluations. Pillar I evaluations, which are under the responsibility of the European Commission, can be presented and discussed within this group. The Expert Group is also an important forum to discuss future evaluations of both pillars of the CAP and replaces and expands on the work of the Expert Committee on Evaluation of Rural Development Programmes (2007-2013), and incorporates its tasks.

"One of the most important messages I took away from the 6th meeting of the Expert Group was to see that evaluation activities are getting strengthened by evaluating Pillar I and Pillar II together. This is a great challenge not only in terms of managing the evaluations, but also in the foreseen results."

Vida Hocevar, Slovenia.

At the 6th meeting of the Expert Group held in Brussels on 17th March 2015, experts became familiar with the new governance structure of the two EU Rural Networks (ENRD and EIP), the new Evaluation Helpdesk team and its work programme for 2015, and some of the specific changes which will affect evaluation processes and methods over the 2014-2020 period.

"I am particularly interested in the integration of evaluation topics with Regional Development Programmes, and the role of National Rural Networks (NRN). The benefit of combining experienced evaluation experts from the Evaluation Helpdesk and the ENRD's networking possibilities will be of great help."

Elita Benga, Latvia.

Overall, Expert Group members were satisfied that the Evaluation Helpdesk would continue to support them with general issues surrounding evaluation methodologies. Feedback was also positive with regards to the specific new tools (such as the annual capacity building event in Member States and specific trainings on demand) which are being developed to assist them in meeting the requirements set out in the CMES.

"The structuring of the new CMES was definitely the most important part of the discussion for me. I am looking forward to seeing the final version and receiving clarification of complementary result indicators, the relationship with Annual Implementation Reports (AIR) for 2017 and 2019, the common evaluation questions, and the relationship with the assessments of other operational programmes."

Roberto Cagliero, Italy.

The Evaluation Helpdesk facilitated an interactive session on the use of the operations database, asking members to reflect how they can make the best use of the database for RDP evaluation in 2017 and what further assistance they would need. Members of the Expert Group highlighted the need for a clear definition and purpose of the operations database. It was also stated that the database has to be completed with different types of data and that collaboration between paying agencies, evaluators, managing authorities and other stakeholders (e.g. LAGs) needs to be ensured. Further guidance, training and information exchange would be useful.

At the end of the meeting, DG AGRI representatives gave some insights on their evaluation and studies plan for 2015-2018. They then invited two contractors to present the state of play of the ongoing synthesis of the ex ante evaluations of RDP's 2014-2020 and the results of the evaluation of investment support under rural development policy. ■



BUILDING CAPACITIES FOR PLANNING EVALUATION OF LOCAL DEVELOPMENT STRATEGIES

The Evaluation Helpdesk delivers first capacity building event in Portugal

A specific Evaluation Helpdesk training activity took place in Lisbon on 12th and 13th May 2015 to build capacities in evaluation planning amongst Portuguese LAGs. The event was initiated and hosted by the Portuguese National Rural Network and the Portuguese Department of Planning, Monitoring and Evaluation. It involved the Managing Authorities of the three Portuguese RDPs, the Paying Agency and the LAG Federation 'Minha Terra'. The Evaluation Helpdesk prepared and ran the training in collaboration with local partners.



Adelina dos Reis, Head of Unit E.4, introduced the training by outlining article 14 of Commission Implementing [Regulation \(EU\) No 808/2014](#) and by advising Local Action Groups (LAGs) to prepare well for the new requirements of the regulation. In the Evaluation Plan (EP), Managing Authorities outline their activities to evaluate the contribution of CLLD/Leader strategies to the achievement of rural policy objectives as well as the planned support for evaluation at LAG level.

Training participants became conscious of the necessity to demonstrate the progress and achievements of Local Development Strategies (LDS) through monitoring and evaluation activities and to contribute to the RDP evaluation.

Luz Correia, of the Portuguese Department of Planning, Monitoring and Evaluation, explained the Portuguese governance context. The Mainland Portugal RDP has an associated Global/National EP and Technical Evaluation Group in order to connect different entities with responsibilities for implementation, evaluation and communication.

Rui Rafael, from the Managing Authority of the Mainland Portugal RDP, stressed the importance of establishing coordination mechanisms between the RDP and LDS evaluations.

- The National Rural Network will promote a common approach to the LDS evaluation and facilitate training activities and the dissemination of good practice.
- The Mainland LDS will include complementary actions with other ESI Funds in order to demonstrate their direct



contribution to the output and result indicators of the Regional Operational Programmes' investment priorities. On the islands, however, the demonstration of contribution will only be related to RDP objectives.

"The Evaluation Plan helps to carry out evaluations at the right time and in the right form."

Rui Rafael,
Managing Authority of RDP Mainland Portugal.

In an interactive part of the training, Jela Tvrdonova from the Evaluation Helpdesk facilitated an exercise to demonstrate the role of evaluation elements in LDS design and evaluation, assuming that the heart of the LDS is its intervention logic. Participants learnt to understand the purpose of an intervention logic and how to define LDS specific objectives and indicators.

"Designing each LDS around an intervention logic will permit a sound identification of priorities and focus areas to be included, and how measures can be implemented to contribute to each of the selected focus areas."

Jela Tvrdonova,
Evaluation Helpdesk.

The second training day focused on the **LDS evaluation**. Andreas Resch and Magda Porta from the Evaluation Helpdesk explored with participants the requirement to set up and implement the LDS evaluation in Portugal and discussed its practical implementation. Participants identified the need for information about the results of LDS implementation, evaluation of partnerships and respective functions, LEADER approach effectiveness, efficiency and impact, efficacy of decentralized politics, and contribution to the RDP evaluation.

Participants assessed the training as being very useful. As the LAGs were yet to start drafting their EP, the training was seen as a good opportunity to achieve a common understanding of the EU concept of monitoring and evaluation. LAGs were made aware of the importance of evaluation, learnt how to build their capacity for the planning and implementation of the LDS EP, and reflected on the need to properly prepare for the evaluation.



For participants from managing authorities and the NRN it was useful to acknowledge and understand the LAGs' main difficulties designing and implementing their evaluation activities.

"This training activity came at the right time to help Local Partnerships in their objectives and tasks."

Luis Chaves,
Coordinator LAG Federation 'Minha Terra'.

 WE WELCOME
**YOUR FEEDBACK ON
THIS NEWSLETTER!**

Please send your comments
and suggestions to

info@ruralevaluation.eu



ANY QUESTIONS?

One of the core responsibilities of the Evaluation Helpdesk is to respond to Member States' queries about evaluating rural development policy. The Evaluation Helpdesk has already provided answers to a series of specific questions received since January.

The majority of questions were sent by Managing Authorities concerned with how to organise the ex post evaluation of RDPs 2007-2013 and prepare the monitoring and evaluation system for the new programming period. All of the questions received by the Evaluation Helpdesk are examined by the permanent experts, who clarify if they are within the remit of the Evaluation Helpdesk, provide draft answers and then agree on a response with DG AGRI's Unit E.4.

Some of the questions raised by Members States so far:

- What should be in the ex post evaluation report 2007-2013?
- Which type of data to use for result indicator R2 "Change in Agricultural output on supported farms/AWU?"
- How to consider contributions of nature conservation measures (Art.20) when programmed under another focus area (FA 4A)?
- How to monitor, quantify and assess additional contributions to focus areas?
- What to measure under target indicator T20 "jobs created in supported projects"?
- How to assess effectiveness and efficiency of area-based measures?
- What to report on the evaluation plan in the AIR 2016?

Where to find the answers?

To see the approved answers please refer to the working paper "Evaluation-related queries" which will be continuously updated throughout the programming period with answers to questions submitted by RDP evaluation stakeholders in Member States.



Send your questions to:

info@ruralevaluation.eu





FIRST THEMATIC WORKING GROUP LAUNCHED!

How can complementary result indicators be used in the assessment of rural development interventions in the AIR to be submitted in 2017? How can results be attributed to RDP interventions? How to address the assessment of secondary effects in focus areas? These are some of the questions the Evaluation Helpdesk seeks to address through its first Thematic Working Group, launched in April 2015.

The Thematic Working Group's (TWG) main purpose is to provide methodological support to Member States regarding specific issues related to the evaluation of Rural Development Programmes. It is typically constituted of Evaluation Helpdesk permanent staff and external experts. As appropriate, DG AGRI staff and Member States' representatives are also invited to contribute to particular TWG activities.

The Evaluation Helpdesk can run one or more TWGs in line with the needs and expectations of Member States.

The Annual Implementation Report (AIR) contains information about the implementation of RDPs and their associated Evaluation Plan. From June 2016, and each subsequent year until 2021, Member States will submit an AIR to the Commission.

In 2017, the AIR will include the **quantification of programme achievements**, in particular through an assessment of **result indicators** (including complementary result indicators), and answers to relevant evaluation questions.

In 2019, the AIR will also contain an assessment of progress made towards **achieving programme objectives**, the RDP's contribution to achieving the Union strategy for **smart, sustainable and inclusive growth**, an assessment of RDP net contributions to changes in the **CAP impact indicator values**, and answers to relevant evaluation questions.

On 20th and 21st April, the Evaluation Helpdesk launched the TWG "Assessment of RDP results: how to prepare for reporting on evaluation in 2017." The TWG will develop guidelines to assist Member States in preparing and conducting evaluation and reporting on programme achievements in the enhanced AIR in 2017. Group members are representatives of DG AGRI, the Evaluation Helpdesk's permanent team and experts from the Evaluation Helpdesk's core team.

The main objective of the first meeting was to agree on the group's purpose and outline the content of the guidelines. The members of the group established a common understanding of the policy and legal context in which the AIR will be produced and clarified the role of evaluation in the implementation of rural development policy.

Setting this context enabled TWG members to clearly identify what is important to include in the guidelines, and gave the group time to consider what needs to be done in Member States during the early stages of RDP implementation to ensure sound monitoring and evaluation during the entire programming period.

The involvement of Member States is crucial to developing these guidelines. Member States will be invited to contribute to the document via the Expert Group on Monitoring and Evaluating the CAP 2014-2020.

The outline and content of the guidelines, as established during the first TWG meeting, will be presented and debated during the 7th meeting of the Expert Group on 25th June 2015.

The TWG will be working together on these guidelines until the end of 2015, when the final document will be published and disseminated in Member States. ■



CMEF OR CMES?!

CMEF: The compilation of rules and procedures necessary for evaluating the whole CAP

CMES: The rules and procedures within the CMEF which relate to rural development (Pillar II of the CAP).

A system within a framework

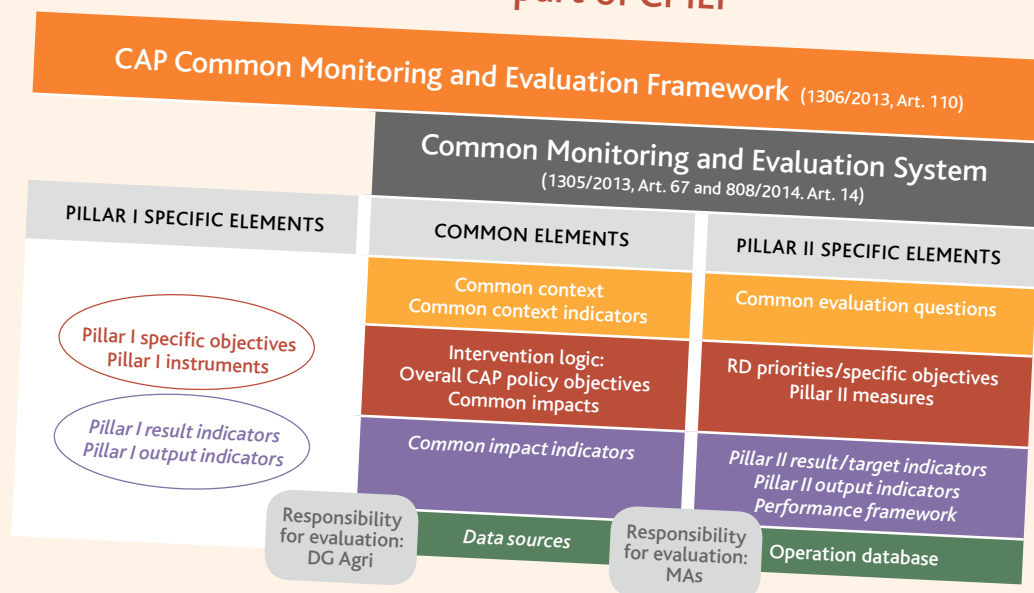
For the first time, the current programming period (2014-2020) offers a Common Monitoring and Evaluation **Framework** (CMEF) to measure the performance of the whole CAP (both Pillar I (direct payments to farmers and market measures) and Pillar II (rural development measures)).

More specifically for rural development (Pillar II), there is a Common Monitoring and Evaluation System (CMES), which is a part of the CMEF. ■

Please refer to the brochure entitled 'The monitoring and evaluation framework for the CAP 2014-2020' for an overview of the CMEF

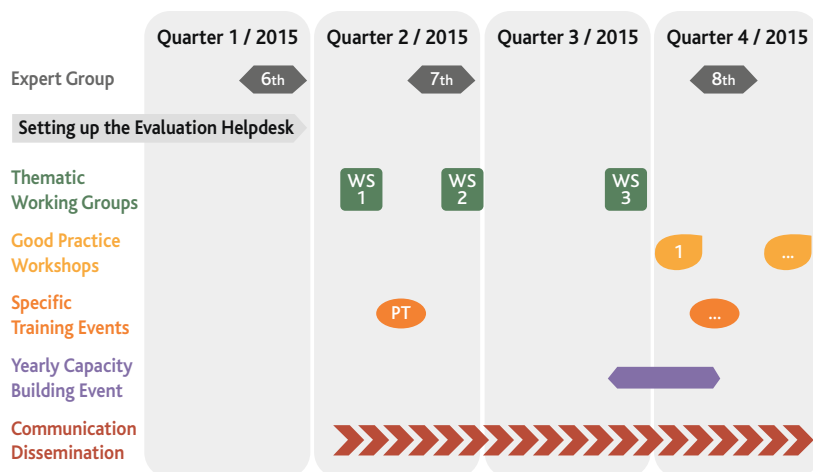


CMES as part of CMEF



CALENDAR - WHAT'S NEXT?

The activities of the Evaluation Helpdesk are set out in the annual work programme. All the different support activities aim to improve the quality and effectiveness of evaluations done by Member States.



Read the latest publications of the Evaluation Helpdesk:

- [Guidelines](#): Establishing and implementing the evaluation plan of 2014-2020 RDPs (June 2015). The final version of this document is identical to the previous draft dated March 2014 but contains references to the final versions of EC Regulations.
- [Working paper](#): Common Evaluation Questions for rural development programmes 2014-2020 (March 2015)
- [Working paper](#): Evaluation-related queries (June 2015) summarizes answers to questions of Member States in relation to the ex post evaluation, The assessment of RDP effects in AIR2017, the evaluation plan and monitoring.

The Evaluation Helpdesk works under the supervision of Unit E.4 (Evaluation and studies) of the European Commission's Directorate-General for Agriculture and Rural Development.

The contents of this newsletter do not necessarily express the official views of the European Commission.

European Evaluation Helpdesk for Rural Development

BE-1040 Brussels, Boulevard Saint Michel 77-79 (Métro Montgomery/Thieffry)
E-mail: info@ruralevaluation.eu • **Website:** <http://enrd.ec.europa.eu/evaluation/>
Tel. +32 2 737 51 30 • **Newsletter Editorial Team:** Valérie Dumont, Hannes Wimmer, Bryony Ulyett • **Graphic design:** Karott' SA • **Contributors:** Enrique Cantero, Blanca Casares, Rein Dessers, Adelina dos Reis, Valérie Dumont, Fernando Fonseca, Phil Hogan, Magda Porta, Jela Tvrdonova, Bryony Ulyett, Hannes Wimmer

A selection of evaluation-related events...

June - July:

- 7th meeting of the Expert Group on Monitoring and Evaluating the CAP (Brussels, 25 June)
- 2nd meeting of Thematic Working Group "Assessment of RDP results: how to prepare for reporting on evaluation in 2017 (Brussels, 26 June)

September:

- 3rd meeting of Thematic Working Group "Assessment of RDP results: how to prepare for reporting on evaluation in 2017 (incl. Sounding Board)
- 2nd meeting of Thematic Working Group "NRN evaluation"

October:

- 3rd meeting of Rural Networks Steering Group meeting (Brussels, 20 October)
- Yearly capacity building event in the Member States (October 2015)
- Good Practice Workshop on assessment of environmental impacts (tbc)

November:

- 8th meeting of the Expert Group on Monitoring and Evaluating the CAP (12 Nov. tbc)
- Publication of 2nd issue of Rural Evaluation NEWS